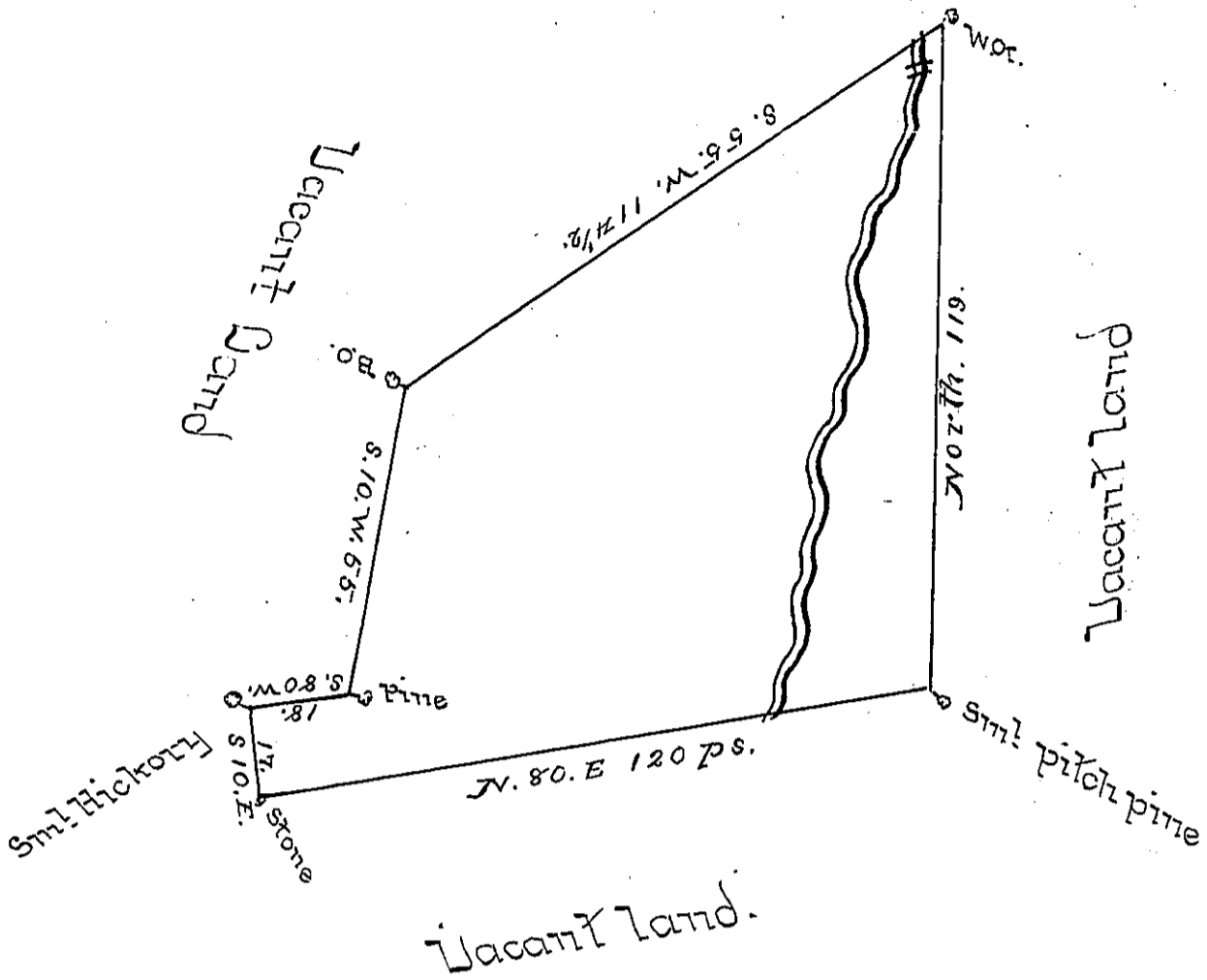


Lehman -
PIKE
✓



By virtue of a Warrant dated the 5. January 1789 Surveyed
 the 9th January 1789 to Moses Cole the above described
 tract of land situate on a small Creek called Stephen L-
 Denmark's Creek including a falls Southward of James
 Randolph's land in Delaware Township Northampton
 County containing Fifty six Acres a quarter & the
 Allowance of six Percent &c.

John Dukens Esq }
 Survey General }

Geo. Palmer

IN TESTIMONY that the above is a copy of the original remaining on file in the
 Department of Internal Affairs of Pennsylvania, made con-
 formably to an Act of Assembly approved the 16th day of
 February, 1833, I have hereunto set my Hand and caused
 the Seal of said Department to be affixed at Harrisburg, this
 first day of March 1898.

James W. Latta
 Secretary of Internal Affairs.